

CERTIFICATE OF LOCATION OF GOVERNMENT CORNER

NORTHEAST Corner of Section 15, Township 107N, Range 39W

5th Principal Meridian, State of Minnesota, County of MURRAY

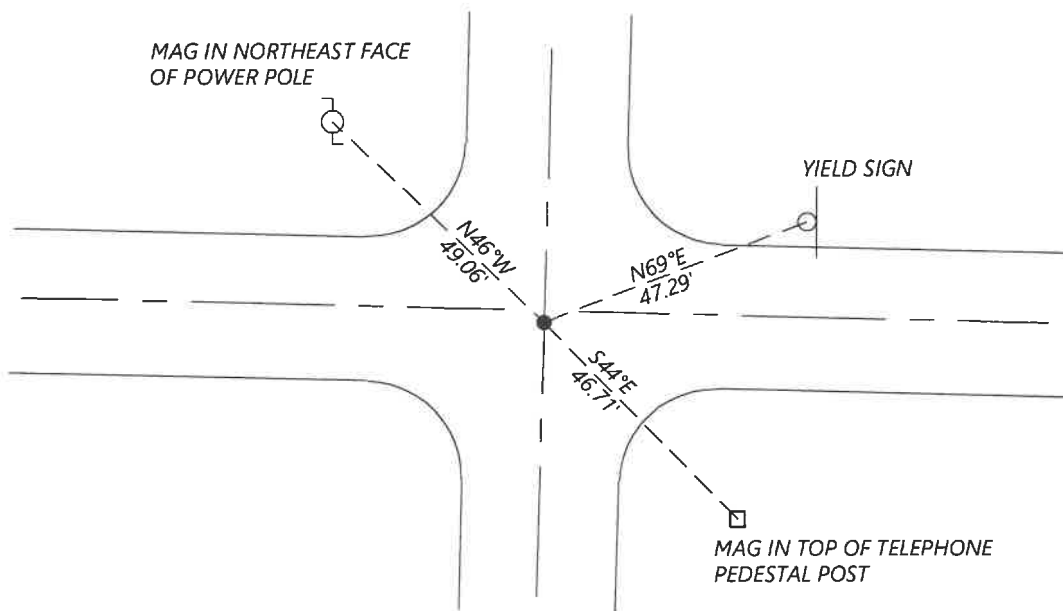
At the corner location shown on the sketch:

On 8/27/2020 found a 1" OPEN PIPE WITH BROKEN CAP FLUSH WITH ASPHALT

left monument as found lowered monument removed monument (explain)

On _____ placed a _____

SKETCH OF REFERENCE TIES



N.T.S.

Statement of evidence for this corner location is on back of this page.

I hereby certify that this document was researched and prepared by me or under my direct supervision and that I am a licensed Land Surveyor under the laws of the State of Minnesota.

Signature [Handwritten Signature]

Date 6/16/2021 License No. 45874

Title:

- Land Surveyor Professional Engineer
- County Surveyor County Engineer

OFFICE OF THE COUNTY RECORDER

County of Murray

I hereby certify that this document was filed in the Co.

Recorder's office at _____ M. on the _____ day of _____ A.D. 20

County Recorder Karen Brown

by JUN 22 2021, Deputy

DOCUMENT NO. _____

Statement of Evidence:

Northeast Corner of Section 15, Township 107 North, Range 39 West, 5th Principal Meridian, Murray County, Minnesota.

No GLO Notes

- 1901 *April, Survey record for Section 11 shows that the corner was established but does not state what was set. Survey shows a distance of 2644ft to the South Quarter corner and 2649.00ft to the West Quarter of Section 11.*
- 2010 *August, A survey in Section 15 by Perry Zieske shows a found iron monument at the corner. He shows a distance of 5295.31ft to the Southeast corner of Section 15.*
- 2010 *November, A survey in Section 10 by Dan Bueltel shows a $\frac{5}{8}$ " iron bar with cap LS 23008 at the corner. He shows a distance of 2650.10ft to the East Quarter corner of Section 10.*
- 2020 *September, Westwood Professional Services searched and found a 1" iron pipe with a broken cap. The position fits well with the 2010 surveys and was accepted as the corner location.*

Analysis of the recovered data, field evidence and survey measurements, indicates that the monument found is the correct perpetuation of this corner. For additional information concerning this corner please contact Westwood Professional Services.